

# C.C.T.E

Centro de Capacitação Técnica Ecumix

[www.ecumix.com.br](http://www.ecumix.com.br)

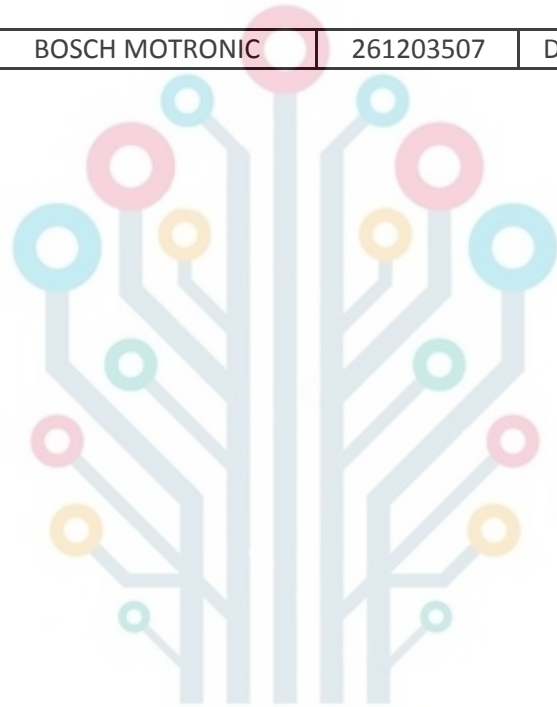
| MARCA | MODELO                   | ANO  | INJEÇÃO         | CÓDIGO      | TIPO EPROM | Nº EPROM   | CLASSE   | CHECKSUM | ARQUIVO      |
|-------|--------------------------|------|-----------------|-------------|------------|------------|----------|----------|--------------|
| FIAT  | BRAVA 1.6 16V - EAF8     | -    | MAGNETI MARELLI | IAW 59F.BT3 | PSOP29F200 | -          | ORIGINAL | EAF8     | EAF8_59F.ORI |
| FIAT  | BRAVA 1.6 16V - FAE5     | -    | MAGNETI MARELLI | IAW1AFBO    | DIP27C512  | 1ABG.86    | ORIGINAL | FAE5     | FAE5_ABG.ORI |
| FIAT  | BRAVA 1.6 16V - FE1C     | -    | MAGNETI MARELLI | 6160089201  | DIP27C512  | 1ABG.83    | ORIGINAL | FE1C     | FE1C_ABG.ORI |
| FIAT  | COUPE TURBO - 51E0       | 1951 | BOSCH MOTRONIC  | 0261204483  | PLCC27C512 | 1037357896 | ORIGINAL | 51E0     | 51E0_483.ORI |
| FIAT  | ELBA 1.6 8V IE - 7E2D    | 1994 | MAGNETI MARELLI | 61602750017 | DIP27C512  | G713AA001  | ORIGINAL | 7E2D     | 7E2D_G7.ORI  |
| FIAT  | FIORINO 1.5 8V IE - 012A | 1994 | MAGNETI MARELLI | 6160270705  | DIP27C256  | 1LEGIVG    | ORIGINAL | 012A     | 012A_G7.ORI  |
| FIAT  | FIORINO 1.5 8V IE - 1E55 | 1993 | MAGNETI MARELLI | 6160270100  | DIP27C256  | G765BRA    | ORIGINAL | 1E55     | 1E55_G7.ORI  |

|      |                               |      |                 |             |            |              |          |      |              |
|------|-------------------------------|------|-----------------|-------------|------------|--------------|----------|------|--------------|
| FIAT | FIORINO 1.5 8V IE - 782F      | 1995 | MAGNETI MARELLI | 6160273301  | DIP27C512  | G715112P02   | ORIGINAL | 782F | 782F_G7.ORI  |
| FIAT | FIORINO 1.5 8V IE - 812A      | -    | MAGNETI MARELLI | 6160270705  | DIP27C512  | G715112D     | ORIGINAL | 812A | 812A_G7.ORI  |
| FIAT | FIORINO 1.5 8V MPI - 4C83     | 1997 | MAGNETI MARELLI | 61600800    | DIP27C512  | 1G7SD44      | ORIGINAL | 4C83 | 4C83_1G7.ORI |
| FIAT | FIORINO 1.5 8V MPI - C320     | -    | MAGNETI MARELLI | 61600813033 | DIP27C512  | 1G7SD41AC95D | ORIGINAL | C320 | C320_1G7.ORI |
| FIAT | FIORINO 1.5 8V MPI - C9FD     | -    | MAGNETI MARELLI | 46747524    | DIP27C512  | 1G7SD41A     | ORIGINAL | C9FD | FC9FD1G7.ORI |
| FIAT | FIORINO 1.5 8V MPI - F7C2     | 1997 | MAGNETI MARELLI | 61600800023 | DIP27C512  | 1G7SD44F7C2  | ORIGINAL | F7C2 | F7C2_1G7.ORI |
| FIAT | FIORINO 1.5 8V MPI - FF21     | 2002 | MAGNETI MARELLI | 61600986003 | DIP27C512  | 1G7SD45A     | ORIGINAL | FF21 | FF21_1G7.ORI |
| FIAT | FIORINO 1.6 8V IE - 2001      | 1994 | MAGNETI MARELLI | 61600271502 | DIP27C256  | G713AN       | ORIGINAL | 2001 | 2001_G7.ORI  |
| FIAT | FIORINO 1.6 8V IE - 2100      | -    | MAGNETI MARELLI | 6160271504  | DIP27C256  | G713A        | ORIGINAL | 2100 | 2100_G7.ORI  |
| FIAT | FIORINO 1.6 8V IE - 4200      | 1994 | MAGNETI MARELLI | 6160271504  | DIP27C512  | G713A        | ORIGINAL | 4200 | 4200_G7.ORI  |
| FIAT | FIORINO 1.6 8V MPI - BED0     | 1994 | BOSCH MOTRONIC  | 0261203507  | DIP27C512  | 1267358969   | ORIGINAL | BED0 | BED0_507.ORI |
| FIAT | MAREA 2.0 20V - 5206          | 1999 | BOSCH MOTRONIC  | 0261206255  | PLCC27C512 | 1037359912   | ORIGINAL | 5206 | 5206_255.ORI |
| FIAT | MAREA 2.0 20V - 5284          | 1999 | BOSCH MOTRONIC  | 0261206256  | PLCC27C512 | 1037359913   | ORIGINAL | 5284 | 5284_256.ORI |
| FIAT | MAREA 2.0 20V - 5380          | -    | BOSCH MOTRONIC  | 0261204381  | PLCC27C512 | 1037358310   | ORIGINAL | 5380 | 5380_381.ORI |
| FIAT | MAREA 2.0 20V - 5BD4          | 1998 | BOSCH MOTRONIC  | 0261204903  | PLCC27C512 | 1037359227   | ORIGINAL | 5BD4 | 5BD4_903.ORI |
| FIAT | MAREA 2.0 20V - 5D19          | 1998 | BOSCH MOTRONIC  | 0261204905  | PLCC27C512 | 1037536452   | ORIGINAL | 5D19 | 5D19_905.ORI |
| FIAT | MAREA 2.0 20V TURBO - 2AED    | 1998 | BOSCH MOTRONIC  | 0261204904  | PLCC27C512 | 1037350110   | ORIGINAL | 2AED | 2AED_904.ORI |
| FIAT | MAREA 2.4 20V - CFBF          | 2003 | BOSCH M1.5.5    | 0261206350  | -          | -            | ORIGINAL | CFBF | CFBF_350.ORI |
| FIAT | MAREA 2.4 20V - D031          | 2003 | BOSCH M1.5.5    | 0261206350  | -          | -            | ORIGINAL | D031 | D031_350.ORI |
| FIAT | MAREA 2.4 20V - FB4A          | 2003 | BOSCH M1.5.5    | 0261206350  | -          | -            | ORIGINAL | FB4A | FB4A_350.ORI |
| FIAT | MAREA 2.4 20V - FD3A          | 2003 | BOSCH M1.5.5    | 0261207513  | -          | -            | ORIGINAL | FD3A | FD3A_513.ORI |
| FIAT | PALIO 1.0 16V MPI - 8172      | 2002 | BOSCH MOTRONIC  | 0261207431  | PSOP29F400 | 103732876    | ORIGINAL | 8172 | 8172_ORI.ZIP |
| FIAT | PALIO 1.0 16V MPI - B2F5      | 2002 | PSOP29F400      | 1037360089  | PSOP29F400 | 1037360089   | ORIGINAL | B2F5 | B2F5_ORI.ZIP |
| FIAT | PALIO 1.0 8V CITIMATIC - 8410 | -    | MAGNETI MARELLI | 61600938003 | DIP27C512  | 1G7 SD10     | ORIGINAL | 8410 | 8410_1G7.ORI |
| FIAT | PALIO 1.0 8V FIRE - 8FCA      | -    | MAGNETI MARELLI | 6160055801  | PSOP29F200 | 59FB.P1      | ORIGINAL | 8FCA | 8FCA_59F.ORI |
| FIAT | PALIO 1.0 8V FIRE - 8FE3      | -    | MAGNETI MARELLI | 6160055802  | PSOP29F200 | 59FB.P1      | ORIGINAL | 8FE3 | 8FE3_59F.ORI |
| FIAT | PALIO 1.0 8V FIRE - 9EDB      | 2001 | MAGNETI MARELLI | 6160055903  | PSOP29F200 | 29F200BB     | ORIGINAL | 9EDB | 9EDB_59F.ORI |
| FIAT | PALIO 1.0 8V MPI - 260D       | 1997 | MAGNETI MARELLI | 6160759083  | DIP27C512  | 1G7SD10-A    | ORIGINAL | 260D | 260D_1G7.ORI |
| FIAT | PALIO 1.0 8V MPI - 47EE       | 2000 | MAGNETI MARELLI | 61600934003 | DIP27C512  | 1G7SD1F      | ORIGINAL | 47EE | 47EE_1G7.ORI |
| FIAT | PALIO 1.0 8V MPI - 4AEC       | -    | MAGNETI MARELLI | 6160090600  | DIP27C512  | XXX          | ORIGINAL | 4AEC | 4AEC_1G7.ORI |
| FIAT | PALIO 1.0 8V MPI - 4B1E       | 2001 | MAGNETI MARELLI | 6160093400  | DIP27C512  | 46768046     | ORIGINAL | 4B1E | 4B1E_1G7.ORI |
| FIAT | PALIO 1.0 8V MPI - 4B1E       | 2002 | MAGNETI MARELLI | 6160093400  | DIP27C512  | 46768046     | ÁLCOOL   | 821B | 4B1E_1G7.ALL |
| FIAT | PALIO 1.0 8V MPI - 5EA5       | 1999 | MAGNETI MARELLI | 6160093400  | DIP27C512  | 1G75DIC      | ORIGINAL | 5EA5 | 5EA5_1G7.ORI |

|      |                             |      |                 |             |            |              |          |      |              |
|------|-----------------------------|------|-----------------|-------------|------------|--------------|----------|------|--------------|
| FIAT | PALIO 1.0 8V MPI - 757E     | -    | MAGNETI MARELLI | 6160075904  | DIP27C512  | XXX          | ORIGINAL | 757E | 757E_1G7.ORI |
| FIAT | PALIO 1.0 8V MPI - 767D     | 1997 | MAGNETI MARELLI | 61600759063 | DIP27C512  | 1G7.SD10     | ORIGINAL | 767D | 767D_1G7.ORI |
| FIAT | PALIO 1.0 8V MPI - 7A6E     | 2000 | MAGNETI MARELLI | 6160093400  | DIP27C512  | 1G75D1F      | ORIGINAL | 7A6E | 7A6E_1G7.ORI |
| FIAT | PALIO 1.0 8V MPI - 821B     | 1999 | MAGNETI MARELLI | 6160090900  | DIP27C512  | 1G7SA3A      | ORIGINAL | 821B | 821B_1G7.ORI |
| FIAT | PALIO 1.0 8V MPI - 9CC0     | -    | MAGNETI MARELLI | 61600759113 | DIP27C512  | 1G7          | ORIGINAL | 9CC0 | 9CC0_1G7.ORI |
| FIAT | PALIO 1.0 8V MPI - 9DAC     | 1998 | MAGNETI MARELLI | 6160075911  | DIP27C512  | 1G7SD10      | ORIGINAL | 9DAC | 9DAC_1G7.ORI |
| FIAT | PALIO 1.0 8V MPI - B076     | 1999 | MAGNETI MARELLI | 61600886003 | DIP27C512  | 1G75D1B      | ORIGINAL | B076 | B076_1G7.ORI |
| FIAT | PALIO 1.5 8V MPI - 4C38     | -    | MAGNETI MARELLI | 6160076104  | DIP27C512  | 1G7SD40      | ORIGINAL | 4C38 | 4C38_1G7.ORI |
| FIAT | PALIO 1.5 8V MPI - B088     | -    | MAGNETI MARELLI | 6160076102  | DIP27C512  | 1G75D40      | ORIGINAL | B088 | B088_1G7.ORI |
| FIAT | PALIO 1.5 8V MPI - E0EC     | 2003 | MAGNETI MARELLI | 61600910103 | DIP27C512  | 1G7SA5A      | ORIGINAL | E0EC | E0EC_1G7.ORI |
| FIAT | PALIO 1.6 16V MPI - 4BBA    | 1996 | MAGNETI MARELLI | IAW1ABG80   | DIP27C512  | IABG80       | ORIGINAL | 4BBA | 4BBA_ABG.ORI |
| FIAT | PALIO 1.6 16V MPI - B684    | 1999 | MAGNETI MARELLI | -           | DIP27C512  | 1ABG8116     | ORIGINAL | B684 | B684_ABG.ORI |
| FIAT | PALIO 1.6 16V MPI - E6FA    | 2001 | MAGNETI MARELLI | 6160045401  | PSOP29F200 | 49FB         | ORIGINAL | E6FA | E6FA_49F.ORI |
| FIAT | PALIO 1.6 8V IE - 14DE      | 2000 | MAGNETI MARELLI | 6160275602  | DIP27C512  | IAW 1G7SP.75 | ORIGINAL | 14DE | 14DE_1G7.ORI |
| FIAT | PALIO ADVENT 1.6 8V-4D6E    | 1999 | MAGNETI MARELLI | 6160087703  | DIP27C512  | 1G7SD.42     | ORIGINAL | 4D6E | 4D6E_G7.ORI  |
| FIAT | SIENA 1.0 8V MPI - 4AEC     | 1999 | MAGNETI MARELLI | IAW1G75D.IC | DIP27C512  | 1G75DIC      | ORIGINAL | 4AEC | S4AEC1G7.ORI |
| FIAT | SIENA 1.3 16V MPI FIRE-B406 | -    | BOSCH MOTRONIC  | 0261207104  | PSOP29F400 | 1037362875   | ORIGINAL | B406 | B406_ORI.ZIP |
| FIAT | SIENA 1.6 16V MPI - 4728    | 1997 | MAGNETI MARELLI | IAW1ABG81   | DIP27C512  | IABG81       | ORIGINAL | 4728 | 4728_ABG.ORI |
| FIAT | SIENA 1.6 8V IE - 0106      | -    | MAGNETI MARELLI | 6160275601  | DIP27C512  | IAW 1G7SP.75 | ORIGINAL | 0106 | 0106_1G7.ORI |
| FIAT | SIENA 1.6 8V MPI - 593E     | 1999 | MAGNETI MARELLI | 6160087701  | DIP27C512  | 1G75D42      | ORIGINAL | 593E | 593E_G7.ORI  |
| FIAT | SIENA 1.6 8V MPI - F40A     | 1999 | MAGNETI MARELLI | 61600877043 | DIP27C512  | 1G7SD42A     | ORIGINAL | F40A | F40A_1G7.ORI |
| FIAT | STRADA 1.5 8V MPI - C9FD    | 1999 | MAGNETI MARELLI | 6160908003  | DIP27C512  | 1G75SD41A    | ORIGINAL | C9FD | C9FD_1G7.ORI |
| FIAT | STRADA 1.6 16V MPI - 4728   | -    | MAGNETI MARELLI | 1AW1ABG81   | DIP27C512  | 1AW1ABG81    | ORIGINAL | 4728 | S4728ABG.ORI |
| FIAT | STRADA 1.6 16V MPI - 8B69   | -    | MAGNETI MARELLI | 6160096600  | PSOP29F200 | 49FB.T4      | ORIGINAL | 8B69 | 8B69_49F.ORI |
| FIAT | TEMPRA 2.0 16V MPI - 165E   | 1997 | MAGNETI MARELLI | 6160079902  | DIP27C512  | G72ABF       | ORIGINAL | 165E | 165E_G7.ORI  |
| FIAT | TEMPRA 2.0 16V MPI - 455B   | 1995 | MAGNETI MARELLI | 6160074007  | DIP27C512  | XXX          | ORIGINAL | 455B | 455B_G7.ORI  |
| FIAT | TEMPRA 2.0 16V MPI - 4E5B   | 1996 | MAGNETI MARELLI | 6160074007  | DIP27C512  | G725M215.P   | ORIGINAL | 4E5B | 4E5B_G7.ORI  |
| FIAT | TEMPRA 2.0 16V MPI - DA42   | 1997 | MAGNETI MARELLI | 6160079902  | DIP27C512  | G72ABF       | ORIGINAL | DA42 | DA42_G7.ORI  |
| FIAT | TEMPRA 2.0 16V MPI - F1AC   | 1994 | MAGNETI MARELLI | 61600718    | DIP27C256  | P8.B01       | ORIGINAL | F1AC | F1AC_P8.ORI  |
| FIAT | TEMPRA 2.0 16V MPI - F1AC   | 1994 | MAGNETI MARELLI | 61600718    | DIP27C256  | P8.B01       | ÁLCOOL   | FC26 | F1AC_P8.ALL  |
| FIAT | TEMPRA 2.0 16V MPI - FB5E   | 1993 | MAGNETI MARELLI | 6160071800  | DIP27C256  | B01923HF     | ORIGINAL | FB5E | FB5E_P8.ORI  |
| FIAT | TEMPRA 2.0 16V MPI - FC26   | -    | MAGNETI MARELLI | 6160071800  | DIP27C256  | IAWP-8       | ORIGINAL | FC26 | FC26_P8.ORI  |
| FIAT | TEMPRA 2.0 8V IE - 70A0     | 1997 | MAGNETI MARELLI | 6160275102  | DIP27C512  | G7.1AAF      | ORIGINAL | 70A0 | 70A0_G7.ORI  |

|      |                            |      |                    |             |            |               |          |      |              |
|------|----------------------------|------|--------------------|-------------|------------|---------------|----------|------|--------------|
| FIAT | TEMPRA 2.0 8V IE - 729E    | 1995 | MAGNETI MARELLI    | 6160271603  | DIP27C512  | G7.14-S214P   | ORIGINAL | 729E | 729E_G7.ORI  |
| FIAT | TEMPRA 2.0 8V IE - 8FC4    | 1996 | MAGNETI MARELLI    | 6160271703  | DIP27C512  | IAWG7         | ORIGINAL | 8FC4 | 8FC4_G7.ORI  |
| FIAT | TEMPRA 2.0 8V IE - CA25    | 1998 | MAGNETI MARELLI    | 6160275102  | DIP27C512  | G7-1AAF524    | ORIGINAL | CA25 | CA25_G7.ORI  |
| FIAT | TEMPRA 2.0 8V MPI - 3C25   | 1995 | MAGNETI MARELLI    | 6160074901  | DIP27C256  | IAWP8/CAL.041 | ORIGINAL | 3C25 | 3C25_P8.ORI  |
| FIAT | TEMPRA 2.0 8V MPI - 3C43   | 1994 | MAGNETI MARELLI    | 61600749013 | DIP27C256  | IAW P8        | ORIGINAL | 3C43 | 3C43_P8.ORI  |
| FIAT | TEMPRA STILE 2.0 8V - AF82 | 1996 | BOSCH MOTRONIC     | 0261203325  | DIP27C010  | 1267358302    | ORIGINAL | AF82 | AF82_325.ORI |
| FIAT | TEMPRA TURBO 2.0 8V -65E8  | 1995 | BOSCH MOTRONIC     | 0261203325  | DIP27C010  | 1267358195    | ORIGINAL | 65E8 | 65E8_325.ORI |
| FIAT | TEMPRA TURBO 2.0 8V - 8EF8 | 1995 | BOSCH MOTRONIC     | 0261203325  | DIP27C010  | 1267358905    | ORIGINAL | 8EF8 | 8EF8_325.ORI |
| FIAT | TIPO 1.6 8V IE - 37A5      | 1995 | BOSCH MONOMOTRONIC | 0261203935  | DIP27C256  | 1267358994    | ORIGINAL | 37A5 | 37A5_935.ORI |
| FIAT | TIPO 1.6 8V IE - 8817      | 1995 | BOSCH MONOMOTRONIC | 0261203388  | DIP27C256  | 1267358142    | ORIGINAL | 8817 | 8817_388.ORI |
| FIAT | TIPO 1.6 8V IE - A045      | 1995 | BOSCH MONOMOTRONIC | 0261200721  | DIP27C256  | -             | ORIGINAL | A045 | A045_721.ORI |
| FIAT | TIPO 1.6 8V IE - A5DD      | 0    | BOSCH MONOMOTRONIC | 0261203388  | DIP27C256  | 1267358025    | ORIGINAL | A5DD | A5DD_388.ORI |
| FIAT | TIPO 1.6 8V MPI - D62A     | 1996 | BOSCH MOTRONIC     | 0261204269  | DIP27C512  | 1037355399    | ORIGINAL | D62A | D62A_269.ORI |
| FIAT | TIPO 1.6 8V MPI - D62E     | 1995 | BOSCH MOTRONIC     | 261204269   | DIP27C512  | 1037355399    | ORIGINAL | D62E | D62E_269.ORI |
| FIAT | TIPO 1.6 8V MPI - ED05     | 1997 | BOSCH MOTRONIC     | 261204507   | DIP27C512  | 1037358606    | ORIGINAL | ED05 | ED05_507.ORI |
| FIAT | TIPO 2.0 16V MPI - D5C1    | 1995 | MAGNETI MARELLI    | 6160075400  | IP27C256   | B04/P8.1754   | ORIGINAL | D5C1 | D5C1_P8.ORI  |
| FIAT | TIPO 2.0 8V MPI - 3B43     | 1995 | MAGNETI MARELLI    | 61600749013 | DIP27C256  | B03/P8-749-0  | ORIGINAL | 3B43 | 3B43_P8.ORI  |
| FIAT | TIPO 2.0 8V MPI - 3CA6     | 1995 | MAGNETI MARELLI    | 61600749003 | DIP27C256  | XXX           | ORIGINAL | 3CA6 | 3CA6_P8.ORI  |
| FIAT | TIPO 2.0 8V MPI - 3F43     | 1994 | MAGNETI MARELLI    | 61600749003 | DIP27C256  | XXX           | ORIGINAL | 3F43 | 3F43_P8.ORI  |
| FIAT | UNO 1.0 8V EP IE - DC95    | 1996 | MAGNETI MARELLI    | 6160273204  | DIP27C512  | G7LC-L232-P   | ORIGINAL | DC95 | DC95_G7.ORI  |
| FIAT | UNO 1.0 8V FIRE - 7786     | -    | MAGNETI MARELLI    | 61600964    | PSOP29F200 | 59FB          | ORIGINAL | 7786 | 7786_59F.ORI |
| FIAT | UNO 1.0 8V IE - 92B6       | -    | MAGNETI MARELLI    | 6160275204  | DIP27C512  | XXX           | ORIGINAL | 92B6 | 92B6_G7.ORI  |
| FIAT | UNO 1.0 8V IE - 93B5       | 1999 | MAGNETI MARELLI    | 6160275205  | DIP27C512  | XXX           | ORIGINAL | 93B5 | 93B5_G7.ORI  |
| FIAT | UNO 1.0 8V IE - 9D39       | -    | MAGNETI MARELLI    | 6160275202  | DIP27C512  | XXX           | ORIGINAL | 9D39 | 9D39_G7.ORI  |
| FIAT | UNO 1.0 8V IE - AC33       | 1997 | MAGNETI MARELLI    | 6160275201  | DIP27C512  | G710AB        | ORIGINAL | AC33 | AC33_G7.ORI  |
| FIAT | UNO 1.0 8V IE - C178       | 2000 | MAGNETI MARELLI    | 6160275204  | DIP27C512  | G710.B012     | ORIGINAL | C178 | C178_G7.ORI  |
| FIAT | UNO 1.0 8V MPI - FD3F      | 2001 | MAGNETI MARELLI    | 61600909033 | DIP27C512  | IAW1G7        | ORIGINAL | FD3F | FD3F_1G7.ORI |
| FIAT | UNO 1.0 MILLE - DF3D       | -    | MAGNETI MARELLI    | 6160273204  | DIP27C512  | XXX           | ORIGINAL | DF3D | DF3D_G7.ORI  |
| FIAT | UNO 1.0 SMART - 96AA       | -    | MAGNETI MARELLI    | 6160276400  | DIP27C512  | G710B014      | ORIGINAL | 96AA | 96AA_G7.ORI  |
| FIAT | UNO 1.5 8V IE - 5515       | -    | MAGNETI MARELLI    | 6160270702  | DIP27C256  | XXX           | ORIGINAL | 5515 | 5515_G7.ORI  |
| FIAT | UNO 1.5 8V IE - 66A8       | -    | MAGNETI MARELLI    | 61600271401 | DIP27C512  | G716A         | ORIGINAL | 66A8 | 66A8_G7.ORI  |
| FIAT | UNO 1.5 8V IE - EE67       | -    | MAGNETI MARELLI    | 6160270602  | DIP27C512  | XXX           | ORIGINAL | EE67 | EE67_G7.ORI  |
| FIAT | UNO 1.5 8V IE - F82F       | 1995 | MAGNETI MARELLI    | 6160273301  | DIP27C256  | G710S112-P    | ORIGINAL | F82F | F82F_G7.ORI  |

|      |                       |      |                |           |           |            |          |      |              |
|------|-----------------------|------|----------------|-----------|-----------|------------|----------|------|--------------|
| FIAT | UNO 1.6 8V MPI - BED0 | 1995 | BOSCH MOTRONIC | 261203507 | DIP27C512 | 1267358969 | ORIGINAL | BED0 | UBED0507.ORI |
|------|-----------------------|------|----------------|-----------|-----------|------------|----------|------|--------------|



**Ecumix Solutions**